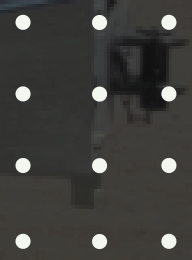
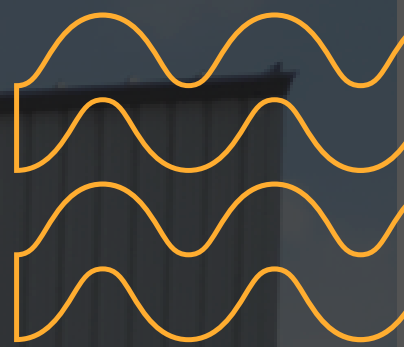
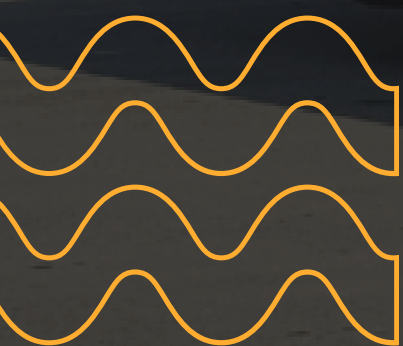


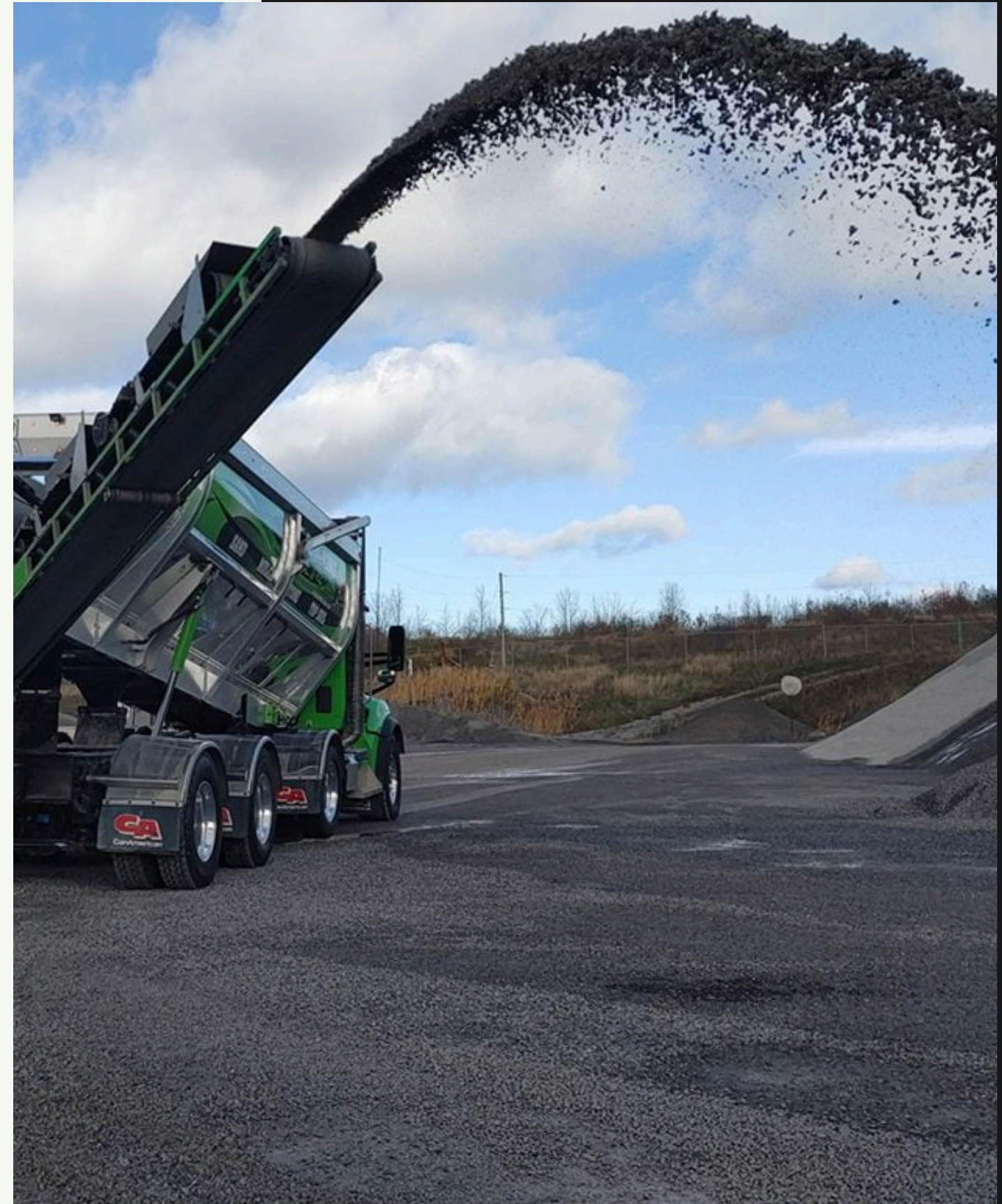


DeFeo Materials Stone Spreading Services



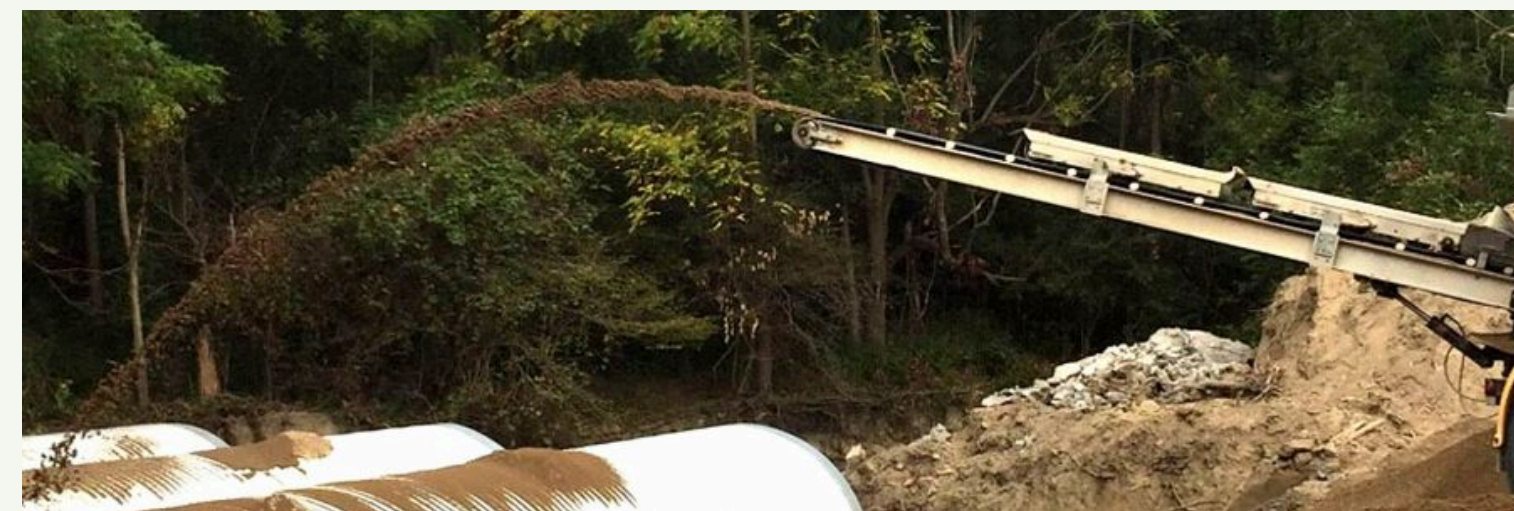
Content of the Presentation

- 01 What is a Stone Slinger?
- 02 Benefits
- 03 Uses
- 04 Safety
- 05 Who We Serve
- 05 Costs and Savings



What is a Stone Slinger?

- A Stone Spreader is a Heavy Duty Truck that is capable of throwing a variety of bulk materials into a precise area that is desired.
- Almost any product can be placed with our state of the art truck including Topsoil, Aggregates below 3 inches, Mulch's and sands.
- Hiring our truck can save on time, payroll and equipment expenses as the product will be placed on delivery exactly where its needed



The Benefits of Contracting our Load Launcher!

Quick Material Delivery

- The conveyor system allows for quick material placement compared to manual

Reduced Labor Needs

- Reduces the need for manual labor to spread material across job site.

Lower Project Costs

- With the reduction of labor you can lower your costs. Accurate spreading reduces waste.



Target Customers who will benefit from this service.

- Concrete and Foundation Contractors
- Utility companies (SCG, Avingrid, Eversource, National Grid)
- Utility Contractors (AJ Penna, John. J. Brennan Construction, B and L Construction, Griffin Brothers excavating, Connecticut Water)
- Construction Companies like (R and M Construction, Richards Corp and even O and G Industries)
- General Contractors
- Landscape Construction companies
- Landscape Supply Yards to offer as a service and give them a percentage
- Quarrys
- New construction builders/developers



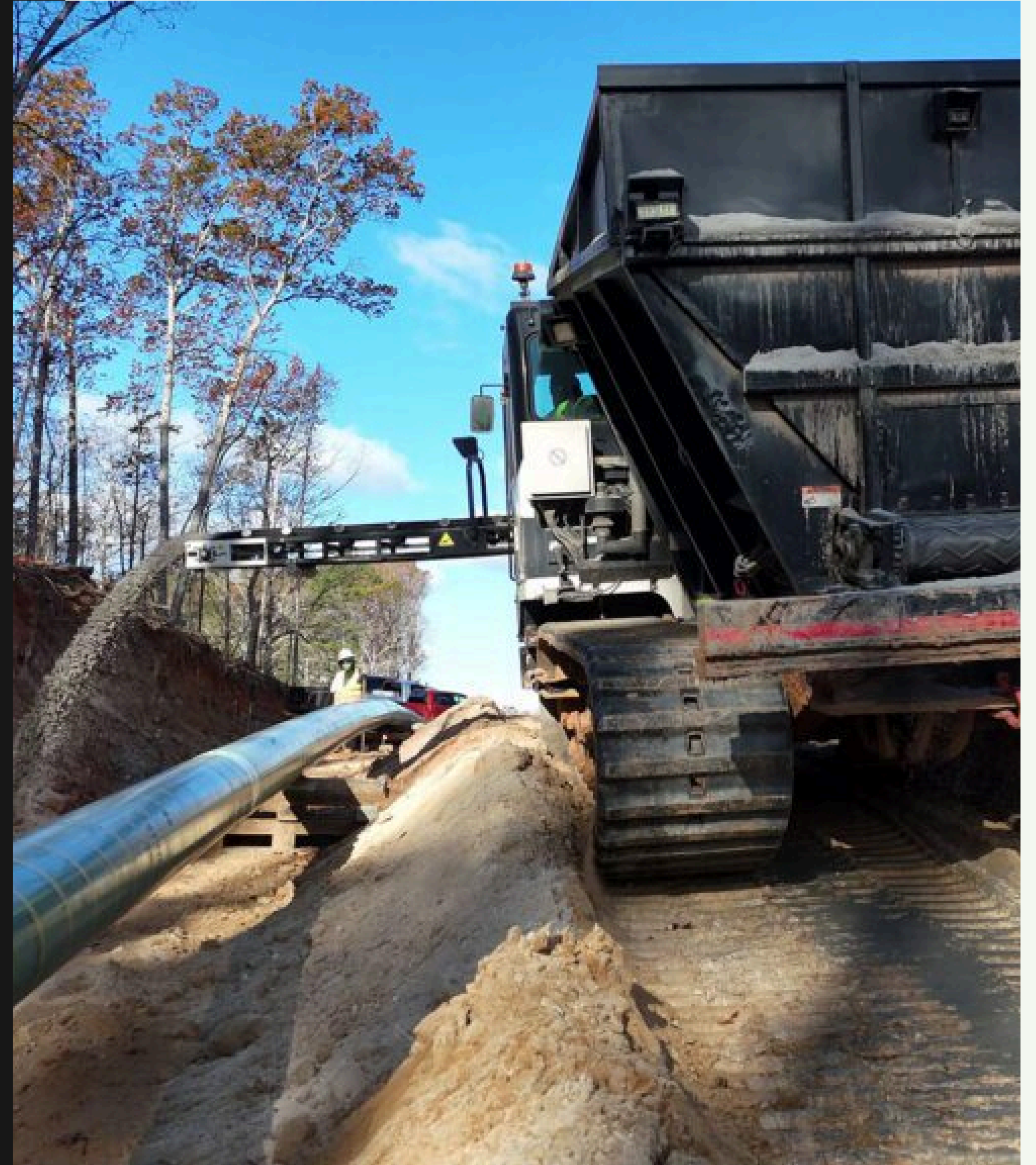
Concrete slab and foundation fill in

- For most residential projects a depth of 4-6" of crushed stone or gravel is recommended below the slab.
- The average size of a new single family home is 2,822 square feet, for a house of this size you will need 44 yards of stone for your base.
- Our stone spreader can place the entire load inside the footing instead of somewhere nearby on the job site, saving equipment and labor hours



Bedding and Back Fill of Utilities and Pipes

- Stone Spreaders are far more efficient at backfilling trenches dug for pipes and Utilities
- We can place the stone while the truck is moving, this makes a backfill rate of 50+ feet per minute is possible
- The stone Sprader eliminates a need for an excavator or other equipment to be needed during backfill



Placement in Difficult to Reach Areas

- More and more job sites are becoming extremely tight and difficult to maneuver. The stone slinger allows for seamless application in tight spaces.

Where Else Can you Place Material?

- Placing the stone in various landscapes such as driveways, parking lots, medians, flowerbeds and more.
- Interior and exterior placement available.



Minimizing Site Disturbance and Reducing Safety Risks

- Using a stone spreader minimizes site disturbance, as the materials are precisely placed without the need for extensive manual labor. This not only preserves the aesthetics of the site but also reduces the risk of accidents and injuries associated with heavy lifting and repetitive tasks.
- Methods of material placement, such as wheelbarrows or manual spreading, can cause significant site disturbance and damage to surrounding areas.

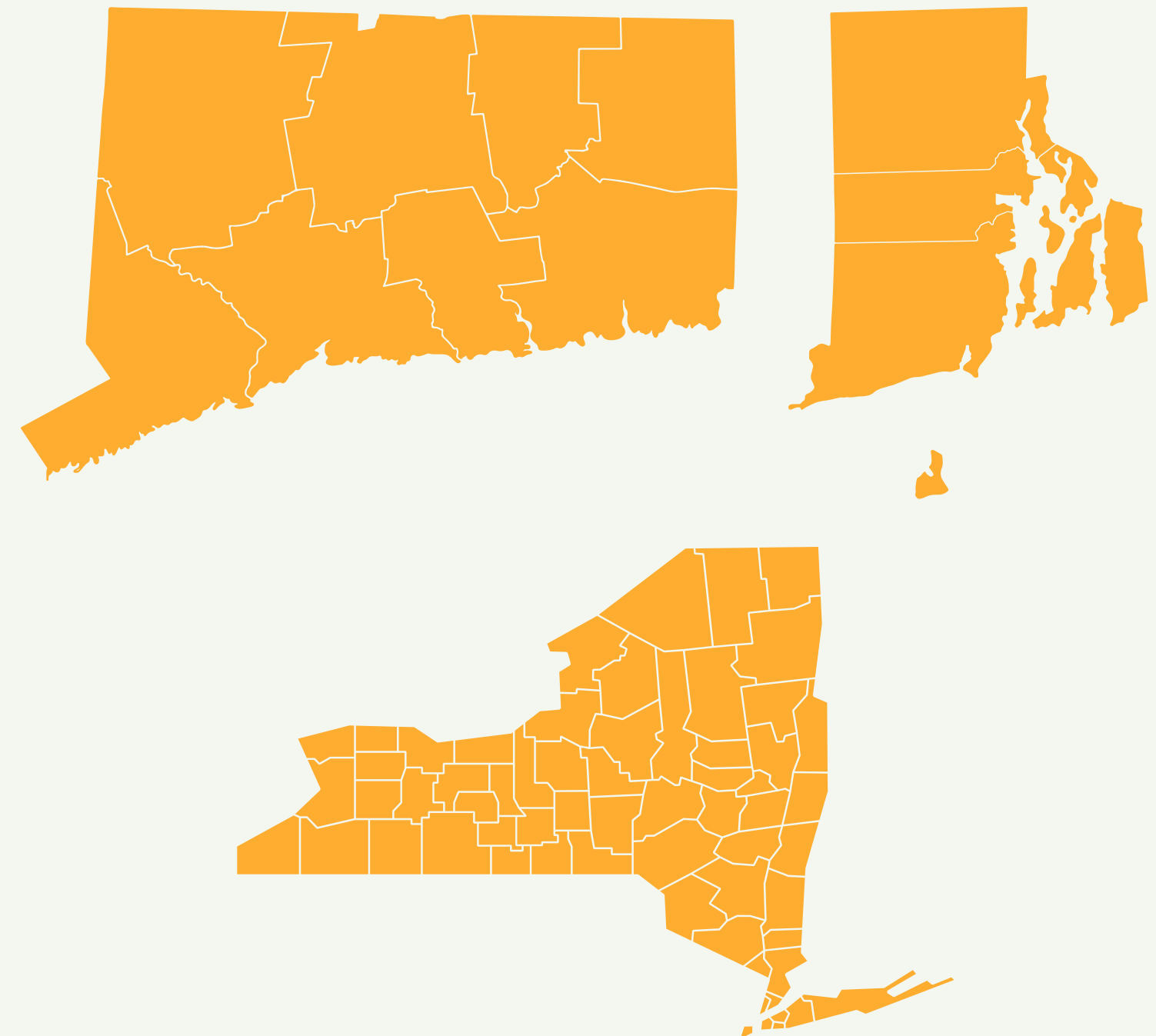


Where are Stone Spreaders Currently Used?

- Stone spreaders are used across the United States frequently, especially in the midwest region in states like Ohio and Indiana.
- Our goal is to service all of Connecticut's needs, whether residential or commercial!
- We will also be serving Rhode Island, the Albany, NY Capitol District, Westchester County and New York City.

Areas We Service

Connecticut, Rhode Island, Westchester County, and New York City





Costs and Savings

The stone spreader can spread 4 yards of stone per minute

Time it Takes to Place 44 Yards Of Material



42 Hours of Manual Labor



4.2 Hours for Skid Steer Operators



11 Minutes for a Stone Spreader

